

MONTHLY MEMBERSHIP PROGRESS REPORT

LOCATION NEW YORK

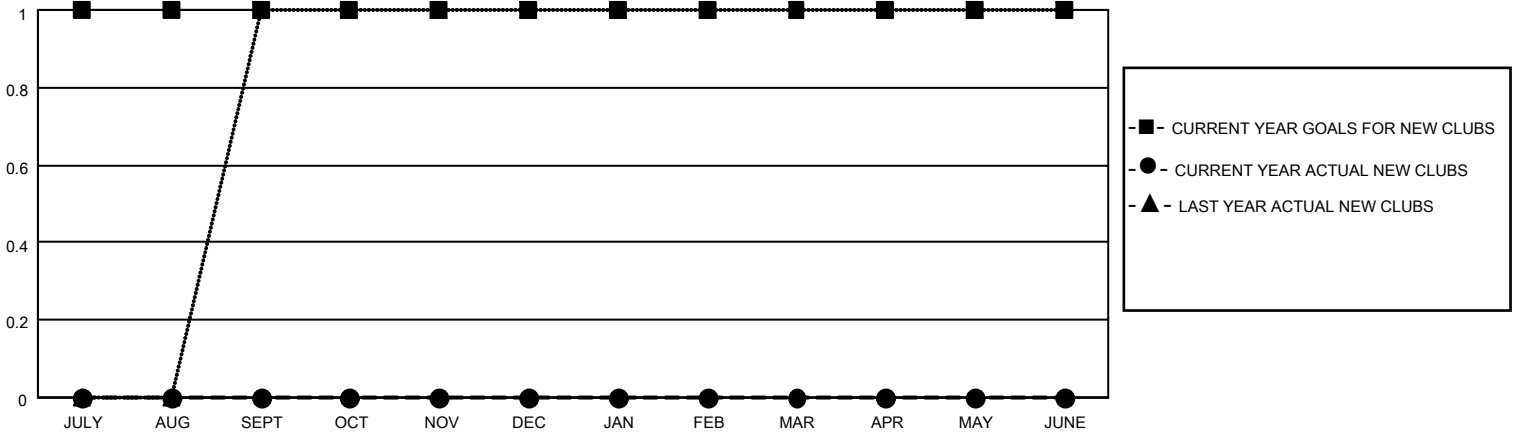
District 20 S

Results as of: 1/31/2022

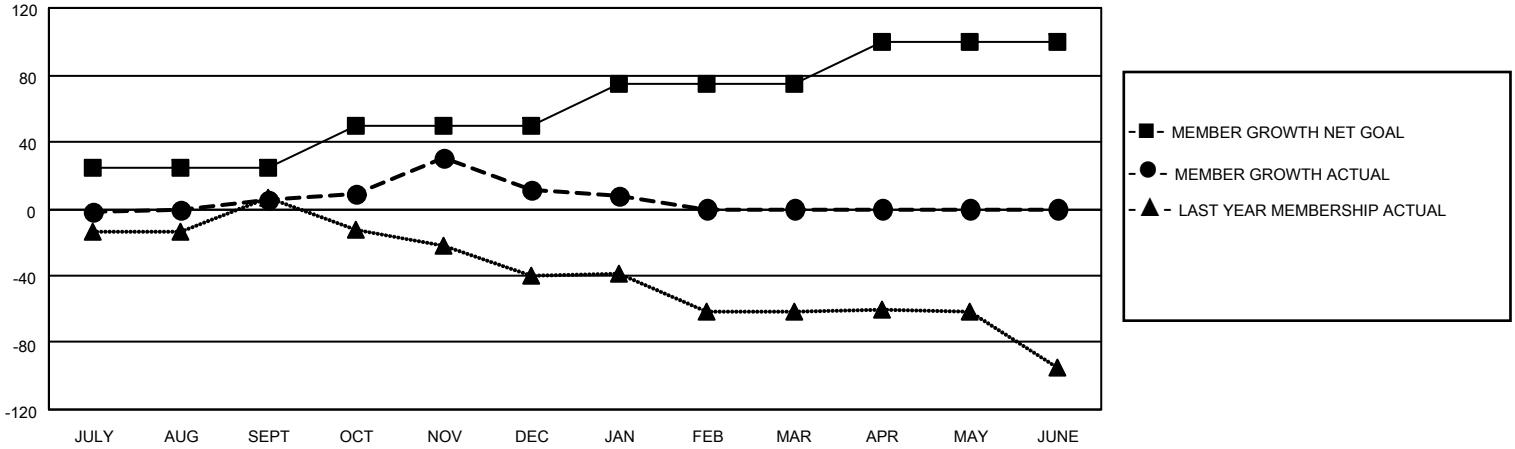
Clubs			
RESULTS FOR 2021-2022			
QUARTER	NEW CLUB GOAL	NEW CLUBS	DROPPED CLUBS
JULY/AUG/SEPT	1	0	0
OCT/NOV/DEC	0	0	0
JAN/FEB/MAR	0	0	0
APR/MAY/JUNE	0	0	0

Members			
RESULTS FOR 2021-2022			
QUARTER	MEMBER GROWTH NET GOAL	MEMBER GROWTH ACTUAL	DROPPED MEMBERS ACTUAL (including transfers)
JULY/AUG/SEPT	25	23	13
OCT/NOV/DEC	25	41	35
JAN/FEB/MAR	25	8	11
APR/MAY/JUNE	25	0	0

GOALS AND ACTUAL NEW CLUBS CUMULATIVE



GOALS AND ACTUAL MEMBERS CUMULATIVE



DROPPED CLUBS: 0	19 CLUBS OF 44 ADDED 1 OR MORE NEW MEMBERS	<u>GENDER DISTRIBUTION</u>
<u>DROPPED MEMBERS</u>		MALE 842 (67.52%)
DECEASED 6		FEMALE 405 (32.48%)
CLUB CANCELLED 0		NON BINARY 0 (0.00%)
OTHER 53	CLICK HERE FOR CUMULATIVE MEMBERSHIP DATA	PREFER NOT TO ANSWER 0 (0.00%)
TOTAL 59		TOTAL FAMILY UNIT MEMBERS 100
		FAMILY MEMBERS PAYING HALF DUES 52